

## PHOTO DELUXE

1. Open PhotoDeluxe.



2. Open your photo from the file menu.



1. Alter your photo if you wish by using the special effects tabs.
2. Choose "**Advanced**" on the side bar to add text.
3. From the "Tools" menu above, choose text. Type, etc, and click OK. You can squash, stretch, and resize your text. However, unlike in PhotoShop, you cannot give the text a gradient (color blend). Besides, PhotoShop makes the text anti-aliased, and it blends into the photo as if it was a part of it.

6. **Save your file.**

.....

Let's say that you have two pictures to start with. However, you want to "cut out" one object from one photo and paste it on the other one. This is possible.

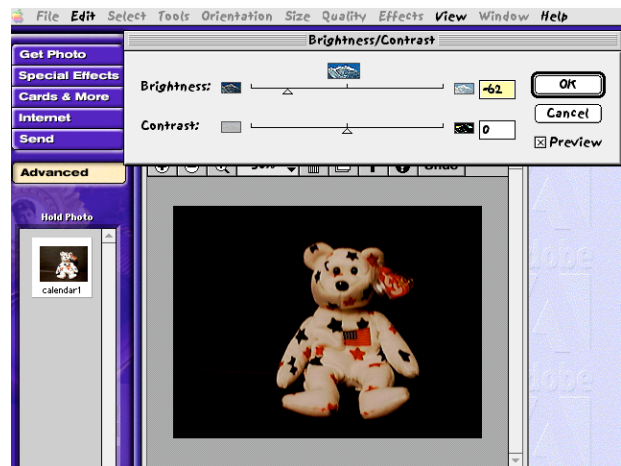
1. Open the picture in which you wish to remove an object into PhotoDeluxe.



2. Choose "Advanced," and click on the "Quality" tab



Choose brightness and contrast if you believe that the background can be changed to a solidified black color when altering the photo's brightness and or contrast.



If this does not do it, choose "Brush" from the "Tools" tab in "Advanced." Select black for the color, and paint around the object. Also, fill in the area outside of the object with black as well.

From the "Select" menu, in the selection tools, choose color wand. Click on the black area of the picture now. This will select that area. From the select menu again, click invert.

Your object is now selected. From the edit menu, choose "Copy." Save and close this picture.

7. Open the picture you wish to add the object to.
- Choose "paste" from the edit menu.!

